



# A Totally New Approach in Automated Tool Management





# Your Total Management System







# The Future is Here

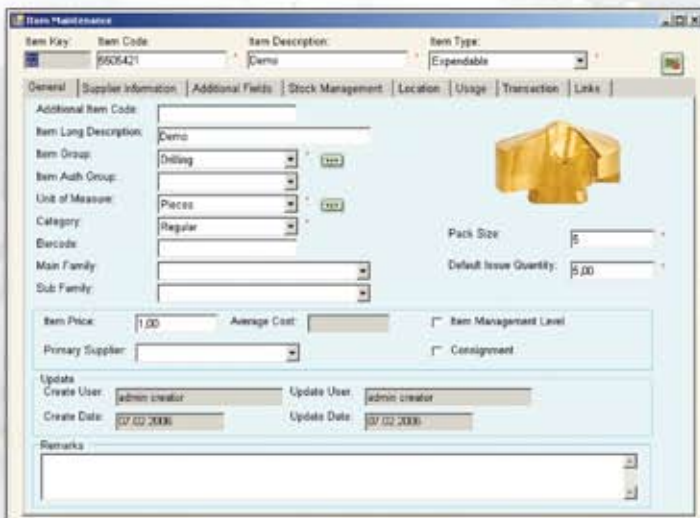


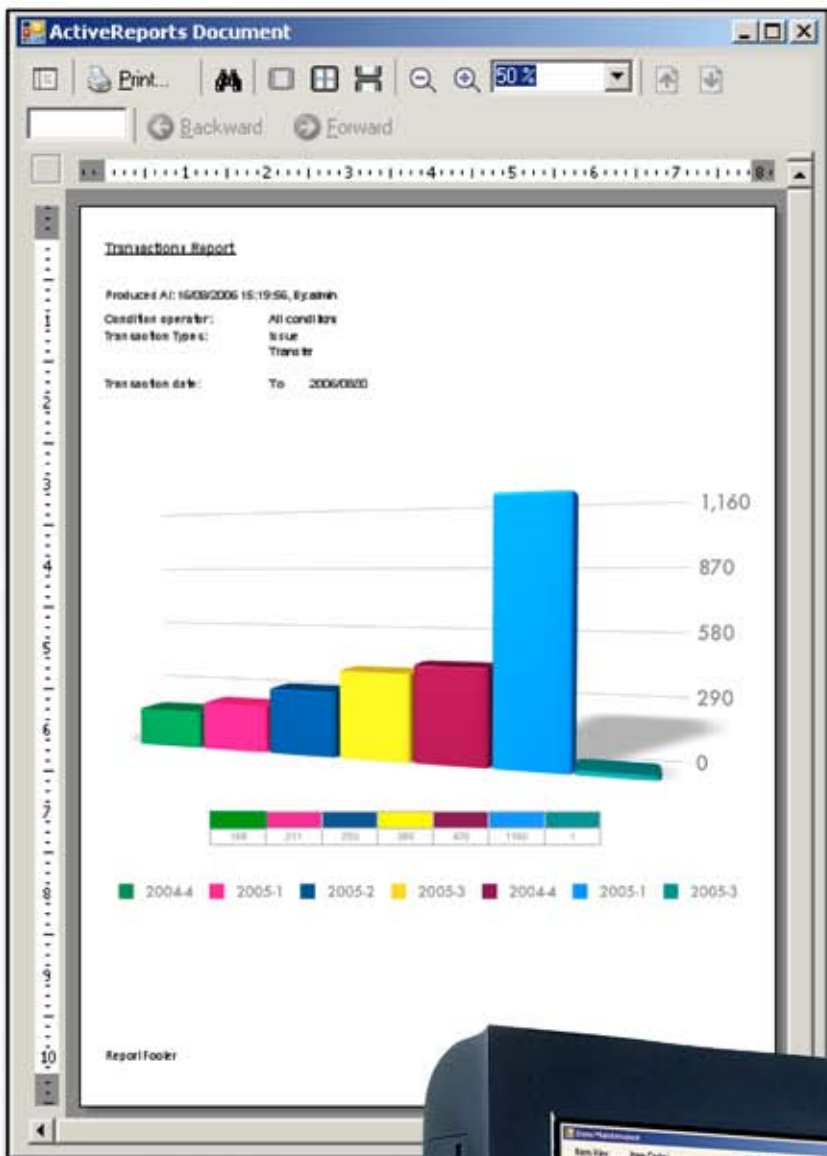
***MATRIX-TM** is a state of the art fully featured software package that enables you to efficiently manage your entire stock of tools.*

## **MATRIX-TM Modules**

**MANAGE** - a comprehensive application for the management of your entire stock of tools.

**TOUCH** - an easy to use Touch Screen driven application which lets the user issue, return and maintain items stored in a **MATRIX** dispenser.





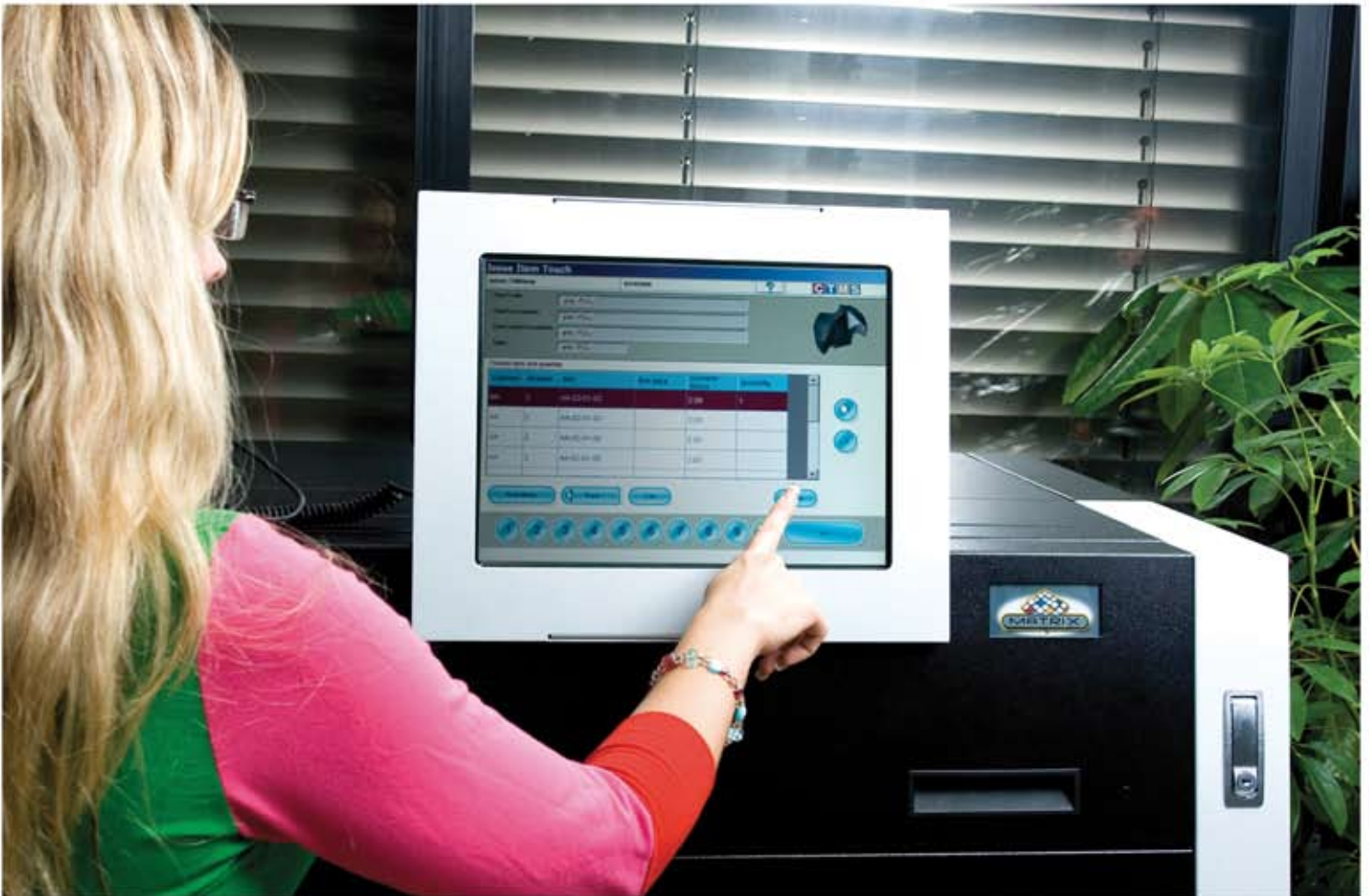
## Drive Down Costs

- Suits small organizations as well as large enterprises.
- Manage multiple sites.
- Reporting tools to drive down production costs.
- Regulate user access to items by Authorization groups and Budgets.
- Reduce down time - the sophisticated planning engine ensures that needed items will be at the point of use on time.
- Easy to use - fast learning curve.
- Cut your tool inventory and management costs.





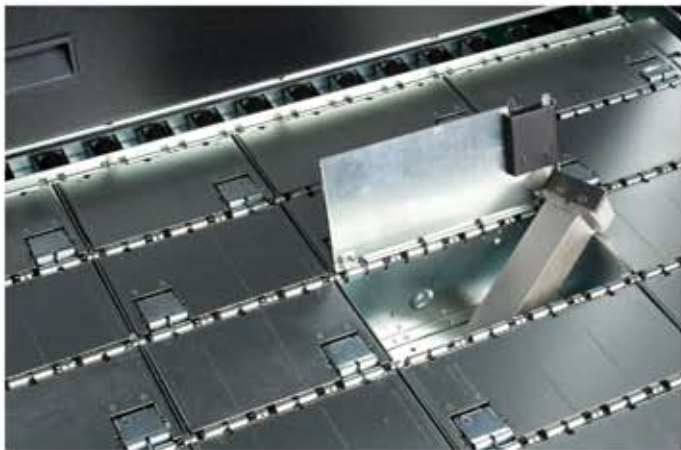
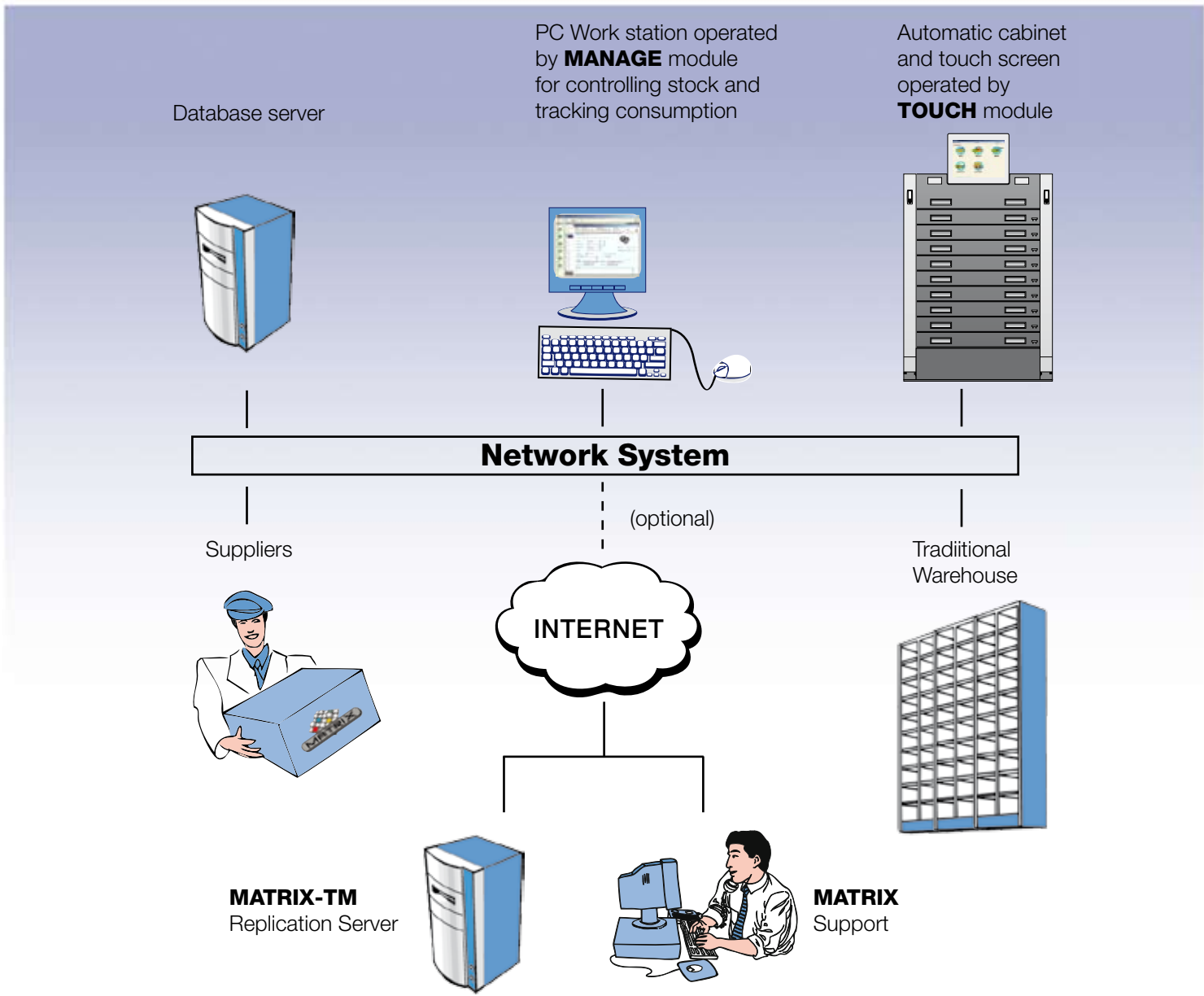
# A Host of Benefits

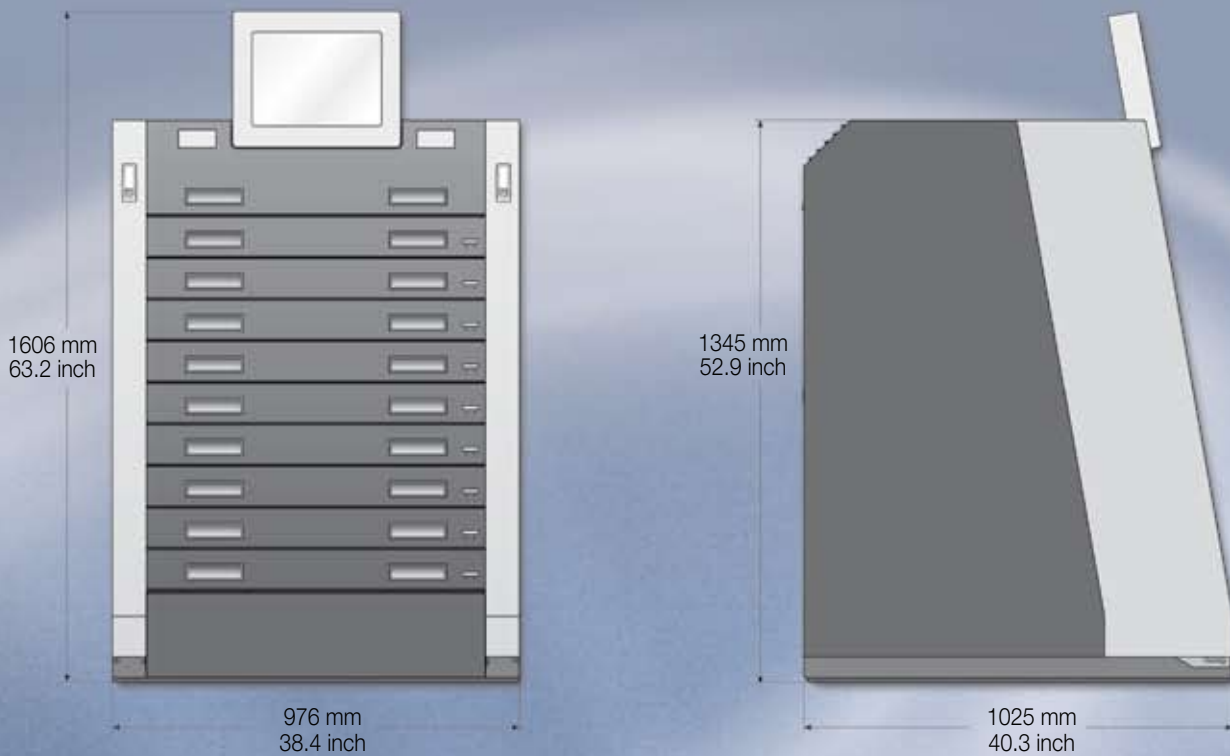


## MATRIX-TM Features

- Full transaction history, by item, employee and cost code.
- Consumption statistics for better planning and cost reduction analysis.
- Automatic calculation of re-order points and purchasing.
- Multi-language user interface.
- Kit management to issue lists of items.
- Attach photos and documents to items.
- Manage items for rework.
- Create reports and graphs that can also be viewed by excel or web browser.
- Create and schedule reports in a variety of formats like (XLS, XML, CSV and PDF) that can be emailed, filed or used as a tool for integration with other systems.
- Import engine for receiving data from other systems.
- Database Administrator tool.
- **MATRIX-TM** developed with the latest technologies using Microsoft. Net 2005 Visual Studio.
- ERP integration including SAP







## MATRIX Technical Specifications

- Cabinet Weight: approximately 630 kg (1389 lb), (subject to configuration).
- Cabinet includes floor mounting plate.
- Drawer Heights (net): 50 mm, 75 mm and 100 mm, (2 inch, 2.9 inch and 3.9 inch).
- Drawers per cabinet: 6 - 9 (depending on height).
- Maximum load weight per drawer: 50 kg (110.2 lb).
- Drawer operating speed: 1 second ( full extension).
- First cabinet (Master) is supplied with PC, 15" 5 wire touch monitor, power supply, UPS, bar code reader and management software.
- Add-on units are connected to the Master via 12V and network cables.
- Extendable up to 7 units including Master, per station.
- Electrical Supply: 110AC +/-20% 4.6A or 220AC +/-20% 2.2A.
- Supplied in top-quality industrial grade zinc coated steel.
- External Colors: black & silver.
- Manufactured under ISO9001-2000.
- CE certified.



**CTMS – Commodity and Tool Management Services**  
 Division of IMC Group Tefen, Israel +972 4 997 0311  
[matrix@ctms-imc.com](mailto:matrix@ctms-imc.com), [www.ctms-imc.com](http://www.ctms-imc.com)



All rights reserved  
 03/2007